

VISULOG

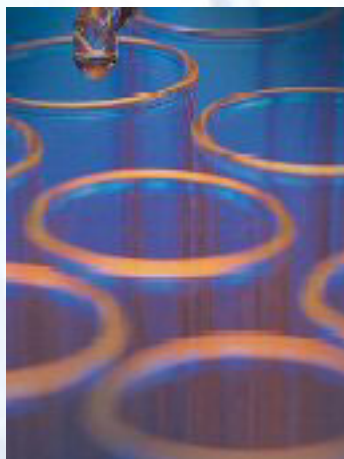


Acquisition

Control

Monitoring

Traceability



Accréditation
n° 2.1524
Électricité-magnétisme



Accréditation
n° 2.1525
Température

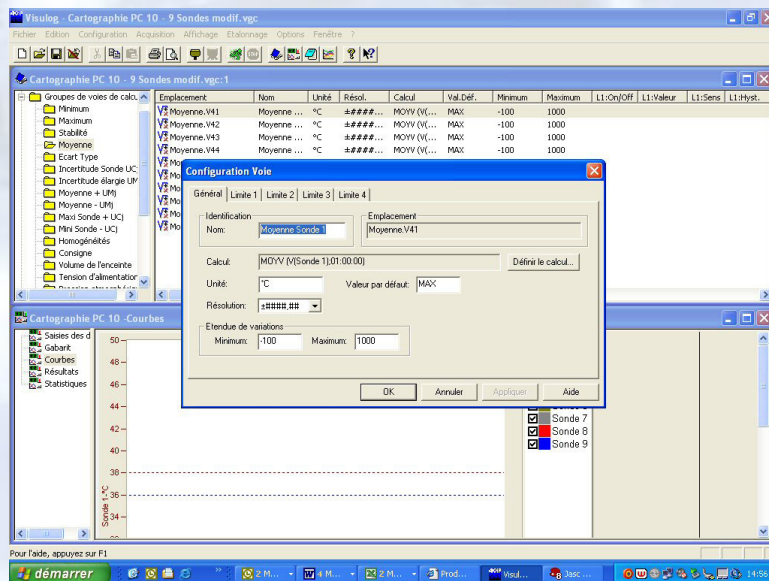


VISULOG: traceability , monitoring and acquisition management software

VISULOG is a wonderful and simple tool to complete the AOIP's data logging systems range

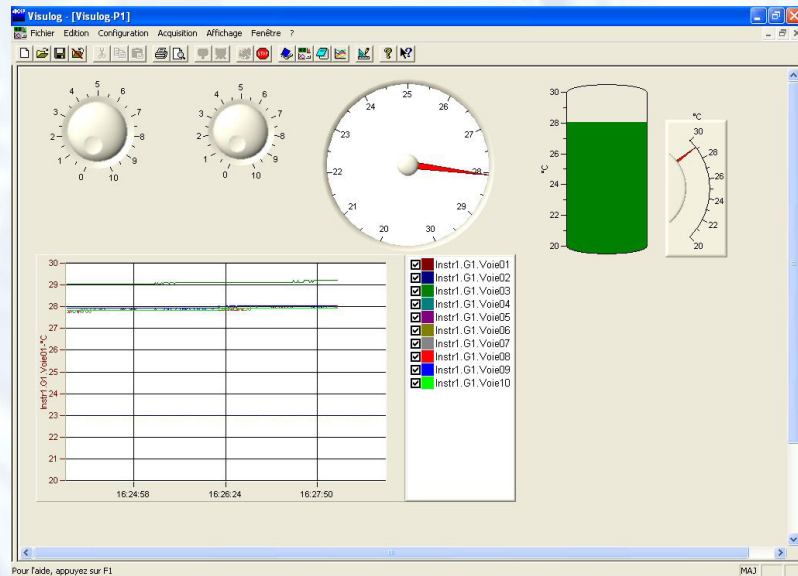
It allows acquisition on a computer on more than 5000 channels, and provides calculation channels, for statistics and advanced calculation as, for instance, needed in ovens mapping

Users can define result files, audit trails, can manage the acquisitions.



Build your own screen

Measurements can be displayed list of results, curves, bargraphes and high definition mimic diagrams
 Pictures or schematic of you installation can be set as a background of the screen, then you can place curves, channels values close the real points



All the results can be exported to spread sheets as excel other software. Alarms can be also defined by the user. These alarms can generate pop up , emails to one or several users

VISULOG and 21CFRPart 11 (FDA Standard)

The visulog software can be configured to fulfil all the 21CFR PART11 requests.

Security management
 Login; passwords
 3 levels: administrator, super user
 User
 Each level with special rights

Passwords wil automatically
 expire unless renewed
 within a configurable time

User accounts are disabled
 after a number of failed
 login attempt and failure are
 logged into the audit trail

Results files are stored in a
 Visulog format *.vgc

Alarms validation are submit
 to signatures



Audit trail:
 all the events are recorded in a
 protected file:
 connections, disconnections, alarms
 appearance alarm clearance,
 configuration modifications
 result readings,....

Déclaration d'un utilisateur

Nom:

Identifiant:

Administrateur (gestion des comptes utilisateurs)
 SuperUtilisateur (configuration de Visulog)

Membre des groupes:

Group1
 Group2
 Group3
 Group4
 Group5

OK
 Annuler
 Aide

Définition des attributs de sécurité

Durée maximale de validité du mot de passe (en jours):

Nombre maximal de Tentatives pour la saisie du mot de passe:

Taille minimale d'un mot de Passe:

Délai de déconnexion automatique si aucune activité (en mn):

Interdiction de connexion après un échec:

Illimitée (intervention obligatoire de l'administrateur)
 Durée de l'interdiction (en mn):

Nom de l'utilisateur et date sur toutes les impressions
 Interdire le Basculement vers une autre application
 Interdire l'écrasement des Fichiers de configuration ou de résultats
 Vérifier le mot de passe à chaque acquittement d'alarme ou modification de config.
 Générer un fichier de Piste pour Audit

OK
 Annuler
 Aide

| Evénements | Date | Evénement | Paramètres | Opérateur | Commentaire |
|-----------------------------|--------------------|---------------------------|-----------------------|-----------|-------------|
| Alarmes | 2007/2004 16:13:16 | Apparition Alarme | @Bob1.GI.Via001.GI... | | |
| Modifications Configuration | 2007/2004 16:13:16 | Modif. Config. Voie | Trib1.GI.Via001.GI... | | "->10" |
| Messages Opérateurs | 2007/2004 16:13:16 | Modif. Config. Voie | Trib1.GI.Via001.GI... | | "->10" |
| Messages Système | 2007/2004 16:13:16 | Modif. Config. Voie | Trib1.GI.Via001.GI... | | "->10" |
| | 2007/2004 16:13:16 | Modif. Config. Voie | Trib1.GI.Via001.GI... | | "->10" |
| | 2007/2004 16:13:59 | Nouveau Fichier de Ré... | sa702004-06-14-2-2... | | "->10" |
| | 2007/2004 16:14:48 | Arrêt de l'occupation | | | |
| | 2007/2004 16:14:51 | Changement d'état | | | |
| | 2007/2004 16:15:00 | Lancement de l'occupat... | | | |
| | 2007/2004 16:15:01 | Apparition Alarme | @Bob1.GI.Via001.GI... | | |
| | 2007/2004 16:16:59 | Arrêt de l'occupation | | | |
| | 2007/2004 16:17:19 | Changement d'état | | | |
| | 2007/2004 16:17:26 | Lancement de l'occupat... | | | |
| | 2007/2004 16:17:29 | Apparition Alarme | @Bob1.GI.Via001.GI... | | |
| | 2007/2004 16:22:07 | Nouveau Fichier de Ré... | sa702004-06-14-2-2... | | |
| | 2007/2004 16:22:18 | Modif. Config. Voie | Trib1.GI.Via001.GI... | | "1000">"10" |
| | 2007/2004 16:22:19 | Modif. Config. Voie | Trib1.GI.Via001.GI... | | "1000">"10" |
| | 2007/2004 16:22:21 | Modif. Config. Voie | Trib1.GI.Via001.GI... | | "1000">"10" |
| | 2007/2004 16:22:27 | Modif. Config. Voie | Trib1.GI.Via001.GI... | | "1000">"10" |
| | 2007/2004 16:22:28 | Modif. Config. Voie | Trib1.GI.Via001.GI... | | "1000">"10" |
| | 2007/2004 16:22:36 | Modif. Config. Voie | Trib1.GI.Via001.GI... | | "1000">"10" |
| | 2007/2004 16:22:44 | Modif. Config. Voie | Trib1.GI.Via001.GI... | | "1000">"10" |
| | 2007/2004 16:22:44 | Modif. Config. Voie | Trib1.GI.Via001.GI... | | "1000">"10" |
| | 2007/2004 16:22:53 | Modif. Config. Voie | Trib1.GI.Via001.GI... | | "1000">"10" |
| | 2007/2004 16:22:53 | Modif. Config. Voie | Trib1.GI.Via001.GI... | | "1000">"10" |
| | 2007/2004 16:22:59 | Modif. Config. Voie | Trib1.GI.Via001.GI... | | "1000">"10" |
| | 2007/2004 16:22:59 | Modif. Config. Voie | Trib1.GI.Via001.GI... | | "1000">"10" |
| | 2007/2004 16:23:05 | Modif. Config. Voie | Trib1.GI.Via001.GI... | | "1000">"10" |
| | 2007/2004 16:23:05 | Modif. Config. Voie | Trib1.GI.Via001.GI... | | "1000">"10" |
| | 2007/2004 16:23:05 | Modif. Config. Voie | Trib1.GI.Via001.GI... | | "1000">"10" |
| | 2007/2004 16:23:12 | Modif. Config. Voie | Trib1.GI.Via001.GI... | | "1000">"10" |
| | 2007/2004 16:23:12 | Modif. Config. Voie | Trib1.GI.Via001.GI... | | "1000">"10" |
| | 2007/2004 16:23:19 | Modif. Config. Voie | Trib1.GI.Via001.GI... | | "1000">"10" |
| | 2007/2004 16:23:19 | Modif. Config. Voie | Trib1.GI.Via001.GI... | | "1000">"10" |
| | 2007/2004 16:23:25 | Modif. Config. Voie | Trib1.GI.Via001.GI... | | "1000">"10" |
| | 2007/2004 16:23:25 | Modif. Config. Voie | Trib1.GI.Via001.GI... | | "1000">"10" |
| | 2007/2004 16:23:25 | Modif. Config. Voie | Trib1.GI.Via001.GI... | | "1000">"10" |
| | 2007/2004 16:23:25 | Modif. Config. Voie | Trib1.GI.Via001.GI... | | "1000">"10" |

Please do not hesitate to contact AOIP to ask for our "white paper", explaining step by step the accordance of VISULOG to the FDA 21 CFR PART 11 requirements, regarding data saving, access restrictions, and audit trail

Sensors Calibration

Each sensor can be calibrated against a standard. All the corrections can be integrated into the datalogging system.

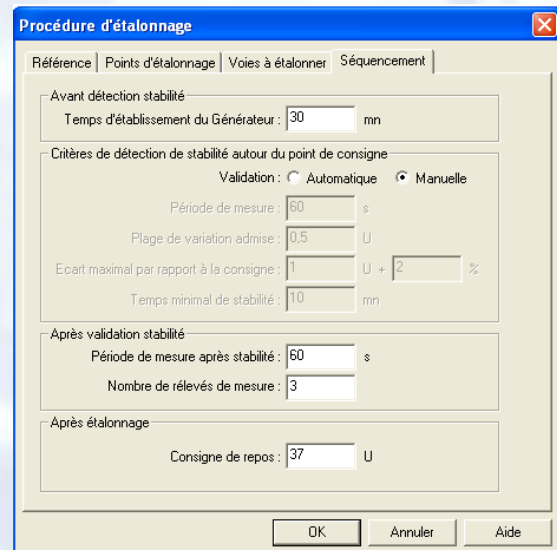
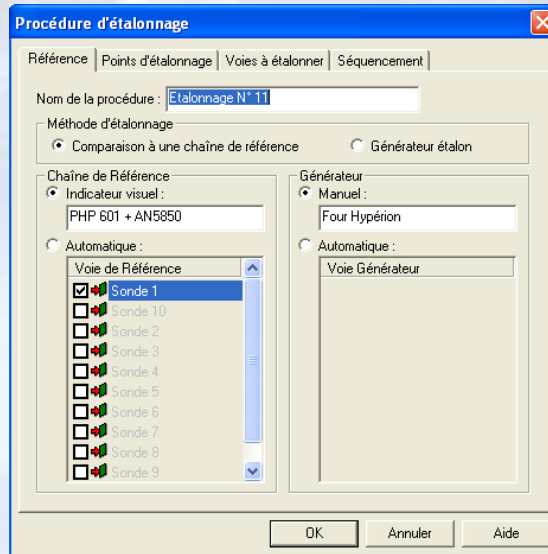
Autoclave validation

Thanks to the calibration facility, autoclave validation can be performed with the Visulog software:

Process description:

- Pre calibration of the temperature sensor, adjustment into the data-logging system, before the validation.
- Autoclave validation
- Post calibration of the thermal sensors

MONITORING: monitoring of chambers in a pharmaceutical/medical installation in order to verify the nondrift of chambers and to grant the traceability.



Mapping of thermal chamber, climatic chambers and storage room

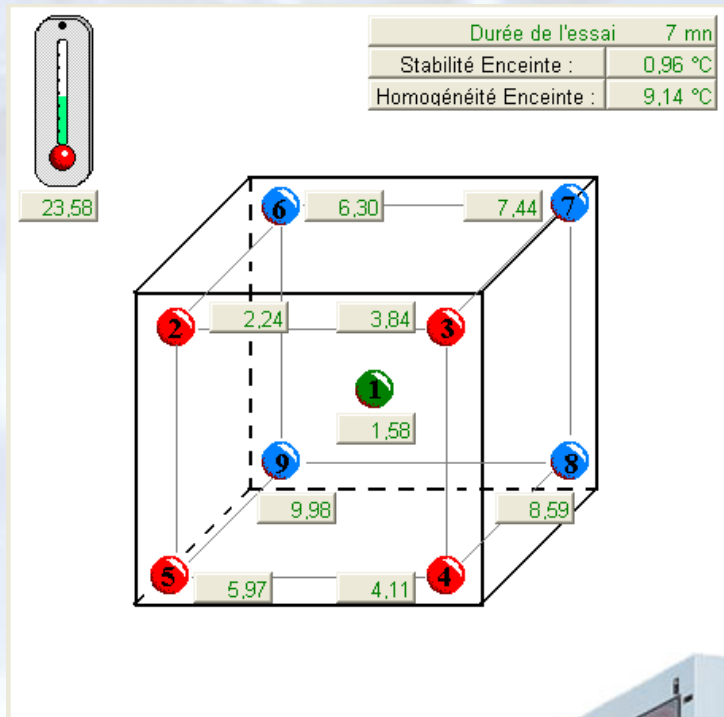
Visulog can perform online the mapping of a chamber or a storage room.

This allows to define precisely the characteristics for the room in terms of stability, homogeneity, and thermal differences.

Storage room

In case of storage, according to the specification of the stored products, it is important to know the temperature difference, and the global behaviour of the room.

Once the sensor are placed; it can also help to perform the real time monitoring on the storage room on the supervisor desktop



Climatic and thermostatic chambers

Visulog mapping facilities will perform all the necessary treatments according the standard NF X15-140: For each sensor and between all te sensors, calculation of stability, homogeneity, maximum, minimum, mean, standard deviation.

Deviation to the setpoint, and deviation to the indicator will be also taken into account.

The Visulog mapping program, is already established for chambers, with volume below 2m3 and between 2 m3 and 20m3.

Mapping of climatic chambers requires use of humidity sensor. At the end of the test a report can be edited. Of course all data are saved inot the computer.

Test report (example)

Résultats d'essais

| Statistiques | Min | Max | Moyenne | Ecart-Std |
|--------------|------|------|---------|-----------|
| Température | 15,0 | 25,0 | 20,0 | 5,0 |
| Humidité | 40,0 | 60,0 | 50,0 | 10,0 |

STATISTIQUES

| Statistique | Min | Max | Moyenne | Ecart-Std |
|-------------|------|------|---------|-----------|
| Température | 15,0 | 25,0 | 20,0 | 5,0 |
| Humidité | 40,0 | 60,0 | 50,0 | 10,0 |

ETATS DE LA CARTOGRAPHIE

Nom de l'enceinte: []

Fonction: []

Statut: []

Stabilité: []

Homogénéité: []

Responsable de l'essai: ADIP SAS

Our complete solution for data acquisition

Datastorage solution from 1 to 300 inputs

Single input with wire or radiofrequency transmission

Video recorder

Modular and stand alone systems



Our solutions for calibration



Dry blocks and ovens

Calibrators for your process maintenance

Pressure calibrators

Standard probes

Temperature sensors



AOIP
BP 182
91133 Ris Orangis cedex
FRANCE

N°Azur 0 810 10 2647
PRIX D'UN APPEL LOCAL

www.aop.com



Accréditation
n° 2.1525
Température



Accréditation
n° 2.1524
Électricité-magnétisme